

TOYOTA
RUMION



Born to be alive

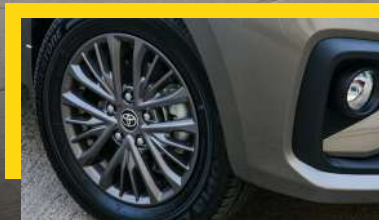
The Toyota Rumion has a cross-over look thanks to its 180 mm ground clearance. Its smooth body and distinct personality are enhanced by 16 inch alloy wheels, large day time running lamps and a chrome grille that together create a strong impression of boldness and elegance.



Robust with smooth lines



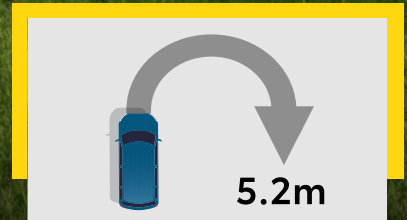
Stylish front chromed grille, with front fog lamps (Deluxe grade).



Alloy wheels with 185/65 R16 tires (Deluxe grade).



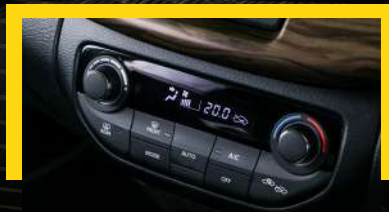
Large projector headlamps with chrome details for more safety and elegance.



Toyota Rumion is agile with a 5.2m turning radius.

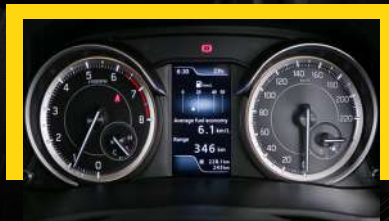
The elegance of simplicity

A sculpted dashboard with leather seats (on Deluxe only) as well as high quality fabric door trims create an elegant and sophisticated interior for a family car.



Automatic Air Condition (A/C)

Adjust your desired temperature and let the automatic system do the rest to maximize the cabin comfort.

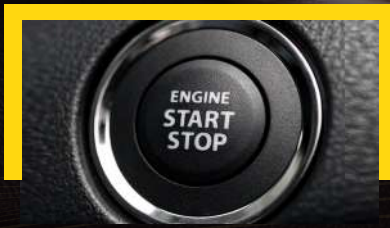


Multi-information display

Gives the driver vital information such as the average fuel economy, power and torque, the outside temperature and much more.

Technology in every sense

Toyota Rumion comes equipped with new-age multimedia features that makes your journey more fun and easy. Thanks to the 7-inch Multimedia infotainment touch screen, you can connect your devices to Android Auto & Apple CarPlay to navigate easily. It has as well MP3, AM / FM and Bluetooth. Play music with just a tap and listen to it on 6 speakers. Charge your devices on USB socket (front) and 12V socket (front and rear).



Start and Stop

A premium feature for starting the car with the push of a button while keeping your keys in your pocket or bag (Deluxe grade).



Steering wheel switches

Audio, telephone and Cruise Control (on Deluxe only).





The more the merrier

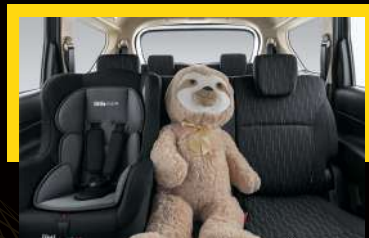
The new Toyota Rumion is a flexible compact 7 seater with ample legroom to satisfy every family member. The interior even accommodates adults in the second and third rows while providing ample luggage space.

The rear 2nd and 3rd rows are easily folded to accommodate all of your luggage requirements. Giving you more space and more flexibility. The Toyota Rumion is intelligently compact, yet convenient, stylish and extremely comfortable.

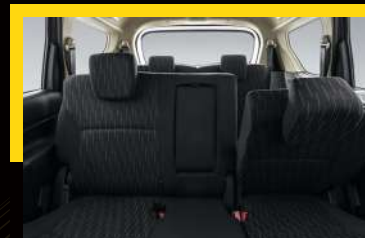


Ready for any occasion with big luggage capacity:

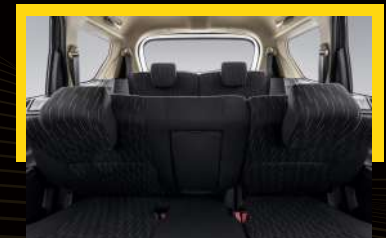
- 153 L (all rows up)
- 550 L (with 3rd row folded)
- 803 L (2nd and 3rd rows folded)



Child seat anchorage on the side secures your most precious passenger.



2nd row 40/60 folding rear seats.



3rd row 50/50 folding rear seats.

Power to impress



Dynamic performance blended with high efficiency

1.5L Engine (K15B) – The Toyota Rumion engine delivers both good power and fuel efficiency. The intake VVT, cylinder head, and piston crowns are designed to boost thermal efficiency and fuel economy. The all-new engine is available in both manual and automatic transmission options.

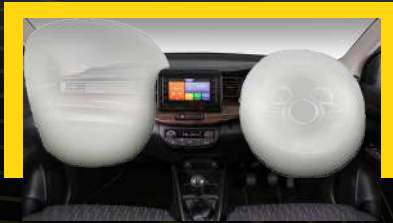
TECT (Total Effective Control Technology)

The creation of smooth and continuous curves of the framework disperse energy and increase rigidity. Not only does the lightweight platform reduce the load on the engine, chassis and suspension it will also lead to better fuel efficiency and enhance vehicle performance such as driving, cornering and stopping.

1.5-Litre Petrol Engine

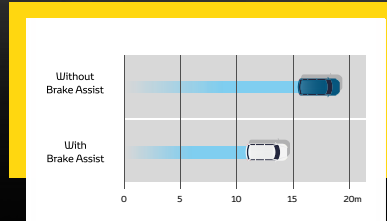
Torque	138 Nm @ 4,000
Power	77kW 105 hp
Displacement	1,462 cc

Your safe space



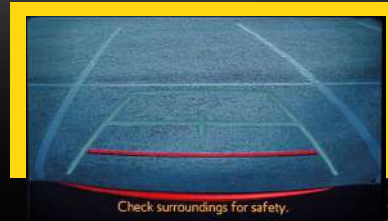
Airbags (SRS)

Driver and passenger airbags, as standard, provide you with the peace of mind in difficult situations.



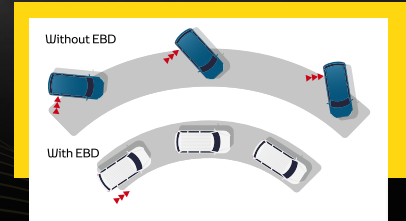
Brake Assist

Brake Assist interprets a quick press on the brake pedal as emergency braking and supplements the braking power applied if the driver has not stepped on the brake pedal hard enough.



Reverse camera and parking sensors

Reverse parking camera and parking sensors assist effortless parking (Deluxe only). When a nearby object is detected, a buzzer sounds inside the cabin as well as its proximity being displayed on the infotainment screen display.



Electronic Brakeforce Distribution (EBD)

This feature ensures that the right amount of force is applied to each wheel according to the weight supported by it. When absent, all the wheels will be applied with the same braking force, irrespective of the traction and the weight supported.

TOYOTA *RUMION*



5 speed manual transmission
Gives you full control for a fun-to-drive experience.



4 speed automatic transmission
Enhances driving pleasure especially for driving in city traffic.

SPECIFICATIONS

ENGINE			1.5L Petrol VVT	
Transmission			5 M/T	4 A/T
Number of doors			5-door	
DIMENSIONS				
Overall length	mm	4395		
Overall width	mm	1735		
Overall height	mm	1690		
Wheelbase	mm	2740		
Tread	Front	mm	1510	
	Rear	mm	1520	
Minimum Turning Radius	mm	5.2		
Minimum ground clearance	mm	180		
CAPACITIES				
Seating capacity	persons	7		
Luggage capacity (seats up, 3rd down, all down)	litres	153 / 550 / 803		
Fuel tank capacity	litres	45		
ENGINE				
Code				K15B
Number of cylinders				4
Number of valves				16
Piston displacement	cm	1462		
Bore x stroke	mm	74 x 85		
Compression ratio				10.5
Maximum output	kw/rpm	77/6000		
Maximum output	hp/rpm	105/6000		
Maximum torque	N.m/rpm	138/4400		
TRANSMISSION			5 M/T	4 A/T
Gear ratio	1st	3909		
	2nd	2043		
	3rd	1407		
	4th	1065		
	5th	769		
	Reverse	3250		
Final gear ratio	4350			4375
CHASSIS				
Steering	Rack and pinion			
Brakes	Front	Ventilated disc		
	Rear	Ventilated disc		
Suspension	Front	MacPherson strut with coil spring		
	Rear	Torsion beam with coil spring		
Tyres	185/65 R15 or 195/55 R16			
WEIGHTS				
Kerb weight (min./with full option)	Kg	1130 - 1740		
Gross vehicle weight	Kg	1130 - 1170		

COLOURS



ZYY - Premium Auburn Red



ZYA - Premium Oxford Blue



ZHJ - Premium Arctic White



ZAM - Midnight Black Metallic



ZTQ - Metallic Magma Gray



ZQK - Prime Dignity Brown



WBE - YTA Silver

TOYOTA
RUMION

GRADES



Life (Standard)

Interior:

- Manual air conditioner (5 Mode)
- Heater
- Ventilated cup holder
- No Audio
- Information display (segment)
- Power socket 12V
- Glove Box
- Front center armrest with cupholder
- Fabric Seats
- Driver and passenger slide and reclining
- Driver seat height adjust
- Seats back pockets (Driver and passenger)
- Seat adjust 2nd row slide and recline
- Seat adjust 3rd row recline
- Separately folding 2nd row rear seat backs and cushions (60/40)
- Separately folding 3rd row rear seat backs and cushions (50/50)
- Power windows (all)
- Driver Window auto down
- Adjustable Steering column tilt

Exterior:

- Black outside handles
- Black outside mirrors
- Intermittent windscreen wiper
- Foldable rear center armrest
- Front center armrest with cupholders
- Room Lamp (Front)
- Room Lamp (Roof Center)
- 7 Seats

Safety:

- ABS - Anti-lock Brake System
- BA - Brake Assist
- EBD - Electronic Brake-force Distribution
- Driver & passenger airbags (SRS)
- Power Steering
- 3 Point Rear Seatbelt, 2-point middle seatbelt
- Front pre-tensioner, force limiter and adjustable
- Alarm and Immobilizer
- ISOFIX points for child safety seat, rear seat

Technical:

- Tyre dimensions 185/65R15
- Steel rims
- Spare tire ground type
- Hallogen Headlamps



Style (on top of Life)

Interior:

- Rear air conditioner
- AM/FM Audio, CD, MP3 and USB
- Bluetooth/hands-free connectivity
- Auxiliary input USB
- 4 Speakers
- Power socket 12V (in console)
- Steering wheel controls, audio and bluetooth
- Wireless power door lock
- Body colour outside handles
- Chrome inside door handles
- Adjustable Steering column tilt
- Passenger sun visor with mirror
- Driver sun visor with ticket holder

Exterior:

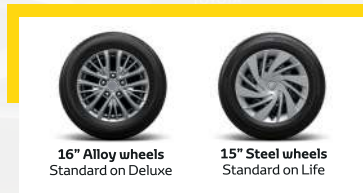
- Body colour outside mirrors
- Outside mirrors electrically adjustable (Manual fold)
- Front and rear mud guards
- Body colour outside handles

Safety:

- Door sensing alarm
- Rear Parking Sensor
- Day / Night rear view mirror (Auto)

Technical:

- Rear Parking Sensor
- Day / Night rear view mirror (Auto)



16" Alloy wheels
Standard on Deluxe

15" Steel wheels
Standard on Life



Deluxe (on top of Style)

Interior:

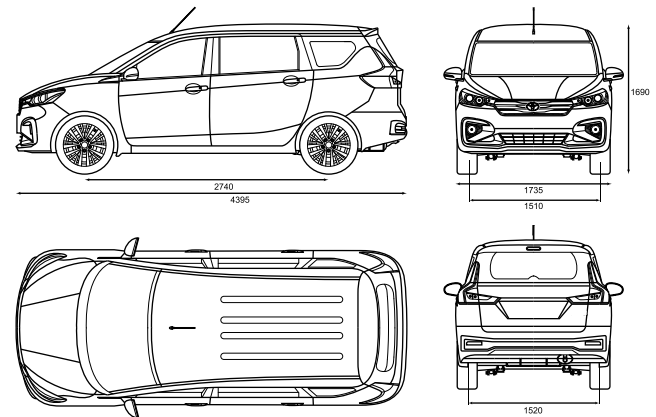
- Automatic air conditioner - single zone
- Display Audio (smart phone linkage)
- Apple CarPlay and Android Auto compatible (App Radio Mode 2xTweeters)
- Leather Steering Wheel
- Information display (Colour)
- Body colour outside door handle
- Driver & passenger sun visor with ticket holder
- Steering wheel controls, audio and bluetooth

Exterior:

- Mud Guards
- Front fog lamps
- Chrome outside handles

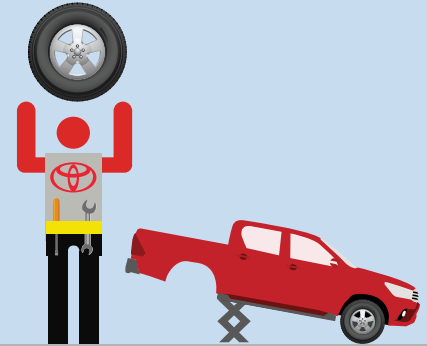
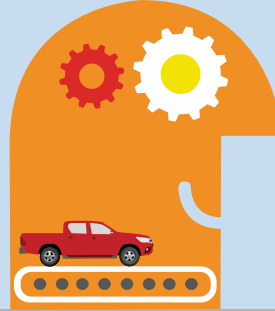
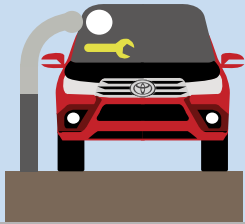
Technical:

- Alloy Wheels
- Reverse Parking Camera
- Smart Start system ("keyless" Start)



All measurements in millimeters.

COMPLETE PEACE OF MIND WITH TOYOTA



Toyota Quality Service

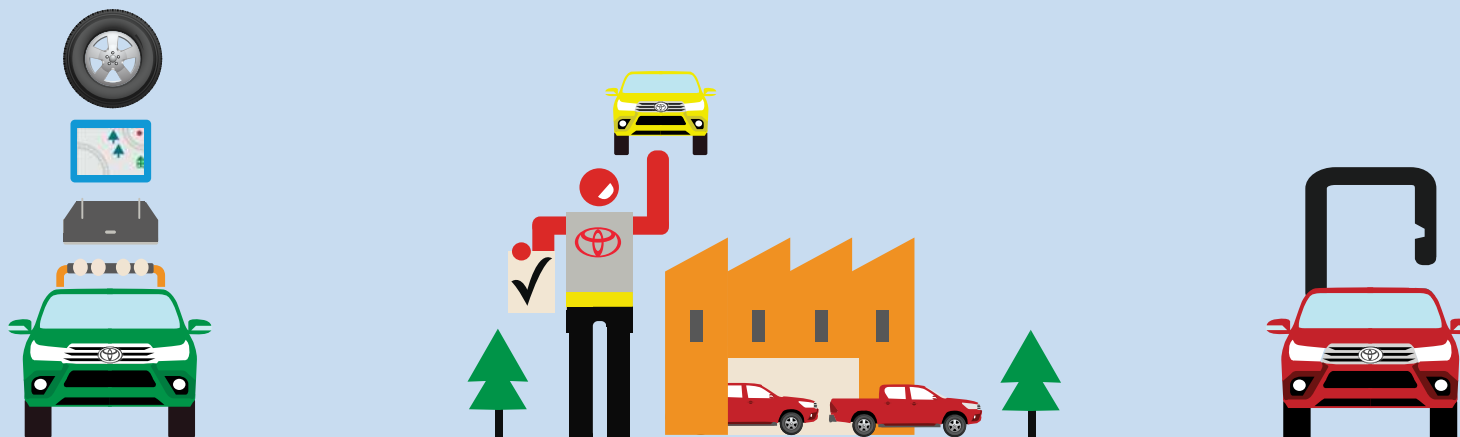
Your Toyota dealership will advise you on your vehicle's service requirements. It will need a health and safety check at least once a year. An intermediate check is necessary every year or 5,000 km.

Toyota Low Maintenance Costs

All Toyota vehicles are designed and engineered to minimize your maintenance costs. This includes fewer parts that require servicing and, equally important, is that Toyota vehicle technology is made easily accessible so that maintenance labor time is less and pricing is competitive.

Toyota Genuine Parts

Providing the reassurance of Toyota quality, only genuine and approved components are used on your vehicle. If the vehicle is damaged, its design helps minimize the cost of repair because the most expensive to replace parts are deliberately located away from common damage zones. The result is ultimately less expensive for parts and labor.



Toyota Accessories

Toyota genuine accessories are designed and manufactured with the same care, quality and attention to detail as Toyota Vehicles. Adding a touch of style, comfort, convenience and practicality, they are tested for exceptional durability to enhance the enjoyment of your new vehicle. All accessories are covered by a 1-year warranty.

Toyota Comprehensive Warranty

Every new Toyota comes with a 5 years or 150,000 km vehicle warranty, which covers any defect caused by a manufacturing fault. Transport to the nearest authorized Toyota repairer will also be covered.* In addition, paint warranty protects against defects and surface rust caused by a manufacturing fault - except load bin's which are covered by a 5 year with unlimited mileage corrosion - perforation warranty* against corrosion of body panels caused by a manufacturing fault in materials or workmanship.

Toyota Added Security

Toyota's comprehensive security system withstands the insurance industry's rigorous five-minute attack test. The alarm system and engine immobilizer are approved by major insurance companies.

*Check with your dealership for specific warranty details.

**FOR MORE INFORMATION ABOUT THE TOYOTA RUMION
TEST DRIVES AND QUOTATIONS,
PLEASE CONTACT YOUR NEAREST TOYOTA DEALERSHIP.**



To the best of our knowledge, all information in this brochure is correct at time of going to print. Details of specifications and equipment provided in this brochure are subject to local conditions and requirements and may, therefore, vary from models available in your area. Please inquire with your local dealership for details on your local specifications and equipment. • Vehicle body colors may differ slightly from the printed photographs in this brochure. • The readability of QR Codes® present in this brochure may differ according to the scanner used. Toyota cannot be held responsible should your device not be able to read any QR Codes® or interactive content markers. • CFAO group reserves the right to alter any details of specifications and equipment without prior notice. • No part of this publication may in any way be reproduced without the prior written approval of CFAO group.

